

TWENTY-FIVE YEARS
OF INNOVATION

25



ENGLISH APPAREL

FALL 2018

 **ARIAT**[®]



WE BELIEVE IN

INNOVATION.


Ariat® was founded on technology and innovation— with the goal of making the highest-quality footwear and apparel for the world's top equestrian athletes.

DEDICATION.

We are a community of riders and people committed to those who ride, ranch, and work outdoors. We make products we're proud to use.

BALANCE.

We play as hard as we work. And playing includes family, friends, and living outdoors.




RIDERS AS ATHLETES.

As athletes, riders put their bodies to the test every day. We create high performance boots and apparel that keeps up.

POSSIBILITIES.

We strive to redesign, reimagine, and reshape our world, while staying true to the values and traditions that keep us authentic.



FALL
2018

ENGLISH APPAREL
CONTENTS

Apparel	02	Technologies & Features
	04	Hyper Reality
	14	Philosopher
	20	Team
	24	Show
	28	Breeches
	38	Men's
	42	Youth

Reference	49	Size Charts
-----------	----	-------------

AVAILABILITY KEY:

Date—Launch date for new colours and styles

Check Availability—Check stock before placing orders

Replenishment—Available for at once shipping



Ariat Technologies & Features

ARIAT® TECHNOLOGY

As the world's leader in innovative performance equestrian apparel, Ariat® has combined premium fabrics with advanced technologies to create the most advanced performance apparel worn by top riders everywhere.



EcoDRY™

Earth-friendly waterproofing. EcoDRY™ technology offers protection against the elements without harmful, environmentally damaging chemicals.



V3® STRETCH

Ariat's exclusive, elasticised mesh panels, built into the lining, accommodate a full-range of motion and maximum breathability in the shoulder and upper torso.



CALF FIT SYSTEM™ (CFS™)

Ariat's Calf Fit System™ (CFS™) is a unique stretch construction which provides custom support at the calf and ankle, and alleviates pressure points and friction under boots.



MOISTURE MOVEMENT TECHNOLOGY™ (MMT™)

Ariat's Moisture Movement Technology™ pulls moisture to the outside of the garment so it evaporates quickly, keeping you dry and comfortable.



VentTEK™

Ariat's VentTEK™ technology features body mapping to enable air flow and regulate body temperature.



CORE CONTROL TECHNOLOGY™ (CCT™)

Ariat's tummy-trimming Core Control Technology™ is made with targeted support for core muscles, to comfortably smooth the midsection. The result is a classic breech with a slimmer, sleeker profile.



V3® FIT

Ariat's V3® technology keeps breeches close fitting and comfortable. An elastic "V" panel built into the back waistband offers superior stretch and recovery to accommodate a rider's varying hip angles.

ARIAT® FEATURES

The Ariat Apparel Collection showcases innovative features such as garment engineering and construction for superior fit and performance, plus technically advanced materials that protect skin from the sun and wick perspiration—all to help take your ride to the next level.



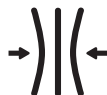
COOLING FABRIC

Fibres infused with cooling technology to reduce skin temperature.



PERFORMANCE STRETCH

Fabrication with just the right amount of flex for increased mobility and all-day performance.



COMPRESSION

Compression fabric provides a sleek, flattering fit and retains its shape.



DOWN INSULATION

Exceptional warmth, minimal bulk. Premium down helps maintain your body's optimal temperature and protects against the cold.



REFLECTIVE

Increases visibility and safety.



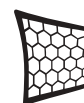
COOL CLIMATE INSULATION™

Cool Climate Insulation™ provides optimal lightweight comfort and warmth.



MERINO WOOL

Merino wool regulates body temperature, retains warmth when wet and delivers antibacterial properties to reduce odour. Machine washable.



SILICONE GRIP

Textured surface for optimal grip in the saddle. Delivers stretch, breathability and flexibility.



SOFTSHELL

Softshell employs a stretch nylon shell for both wind and water resistance. A stretch microfleece backing delivers superior heat retention while remaining breathable.



SUN PROTECTION FABRIC™

Provides protection from sun rays.



WATERPROOF BREATHABLE

Waterproof breathable garments are windproof, waterproof and seam-sealed. Surface fabric repels wind and water but allows body vapour to escape.



WIND AND WATER RESISTANT

Wind and water resistant garments employ a thin technological coating on lightweight surface fabric to block wind and protect from light rain.



WIND RESISTANT

The lightweight surface fabric helps block wind and prevent cold air from coming through.

ARIATTEK®

AriatTEK Series products are equipped with advanced fabric technology to defend against the elements.



AriatTEK® COLD SERIES

Cold Series apparel keeps the body's core warm when temperatures aren't.



AriatTEK® HEAT SERIES

When the competition heats up, Heat Series apparel keeps riders cool.

PARTNER TECHNOLOGIES

Ariat partners with leading experts in fabric technologies to develop innovative performance products.



BLUESIGN®

The independent bluesign® standard is the response to increasing demand for textile products that are environmentally friendly, pose no health hazards, and conserve resources to the greatest possible extent. The bluesign® standard is built around five principles: resource productivity, consumer safety, air emission, water emission and occupational health and safety.

©bluesign® is a registered trademark of bluesign technologies ag. All rights reserved.



ICEFIL®

Xylitol-based cooling system reduces skin temp up to 5°F.

- > Highly-efficient wicking fibres rapidly pull moisture away from skin
- > Nano particles woven into fabric eliminate odours and provide sun protection



NANOSPHERE®

NanoSphere® technology delivers a durable protective function through a high level of water resistance and natural self-cleaning.

-NanoSphere® is a registered trademark of Schoeller Technologies AG, Switzerland (patent protected technology). All rights reserved.



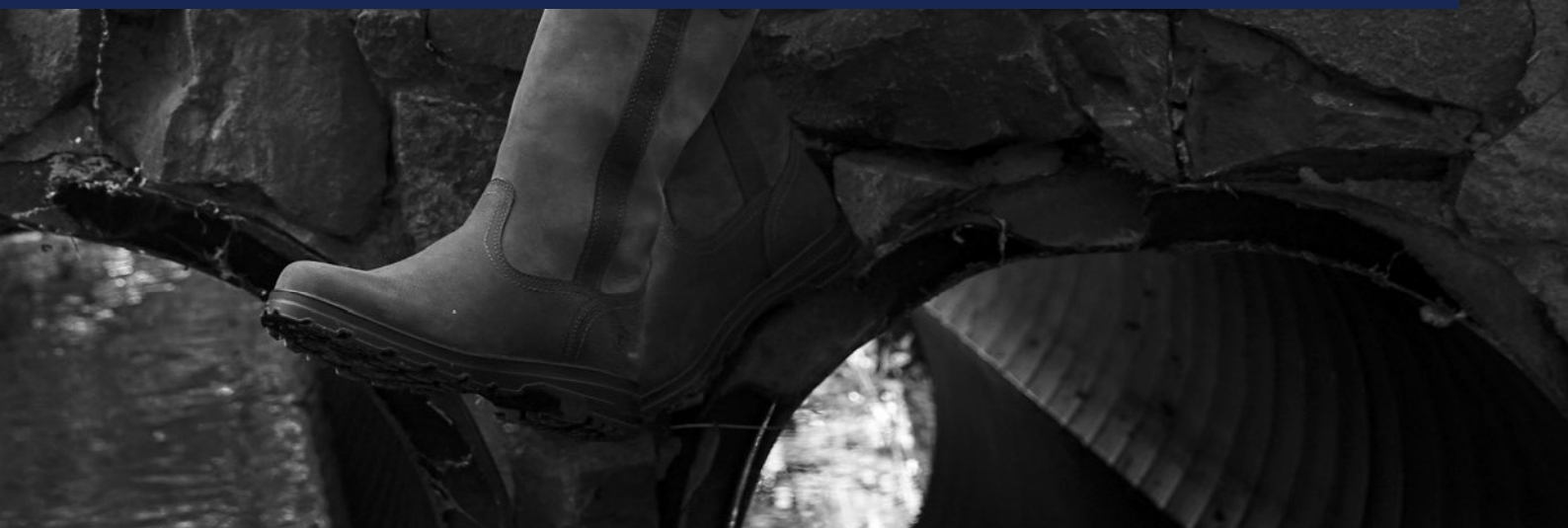
PRIMALOFT®

The Primaloft® family of insulations is widely regarded as the highest-performing on the market, offering comfort and protection in variable weather conditions. Primaloft® Black Insulation Eco is no different, offering the warmth, softness and lightweight comfort you expect to deliver performance you can feel. It's packed with everything you need to brave the elements. And best of all it contains 60%-post consumer recycled material.

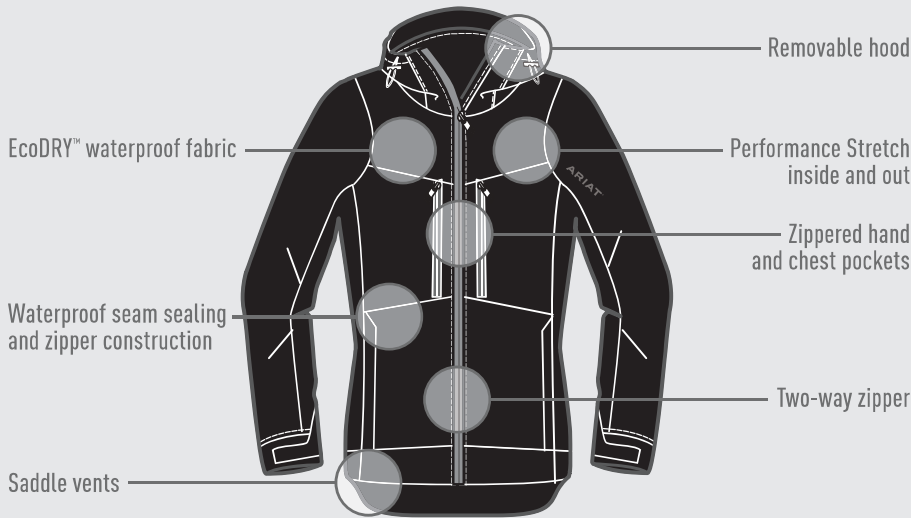


HYPER REALITY

8/15/18 Collection



VERACITY H2O JACKET



NEW STYLE

Athlete Pick



Available 8/15/18

VERACITY H2O JACKET

COLOUR Black
STYLE# 10023568

Waterproof seam sealing and zipper construction • EcoDRY™ waterproof fabric • Performance Stretch throughout • Removable hood • Saddle vents • Two-way zipper • Zippered hand and chest pockets

XS	S	M	L	XL
----	---	---	---	----

NEW COLOUR



Available 8/15/18

MOMENTO H2O JACKET

COLOUR Graphite Heather
STYLE# 10023563

Waterproof construction • EcoDRY™ waterproof fabric • Removable hood • Fully lined • Seam sealed • Zippered hand pockets • Two-way zipper

XS	S	M	L	XL
----	---	---	---	----

NEW STYLE



Available 8/15/18

WORKHORSE H2O COAT

COLOUR Graphite
STYLE# 10023571

Waterproof canvas shell • Quilted hex lining • Zip and patch hand pockets • Removable hood

XS	S	M	L	XL
----	---	---	---	----

Check Availability

IDEAL DOWN® JACKET

COLOUR Black
STYLE# 10017853

Packable down for the ultimate lightweight warmth • Packs easily in attached pouch

XS	S	M	L	XL	XXL
----	---	---	---	----	-----

NEW COLOUR



Available 8/15/18

IDEAL DOWN® JACKET

COLOUR Atomic Blue
STYLE# 10023784

Packable down for the ultimate lightweight warmth • Packs easily in attached pouch

XS	S	M	L	XL	XXL
----	---	---	---	----	-----

NEW STYLE



Check Availability

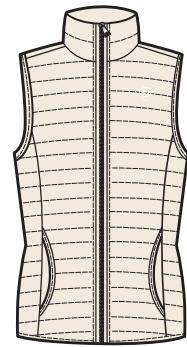
IDEAL DOWN® VEST

COLOUR Black
STYLE# 10015856

Packable down for the ultimate lightweight warmth • Packs easily in attached pouch

XS	S	M	L	XL	XXL
----	---	---	---	----	-----

NEW COLOUR



Available 8/15/18

IDEAL DOWN® VEST

COLOUR Raw Canvas
STYLE# 10023899

Packable down for the ultimate lightweight warmth • Packs easily in attached pouch

XS	S	M	L	XL	XXL
----	---	---	---	----	-----

Hyper Reality

NEW COLOUR



Available 8/15/18

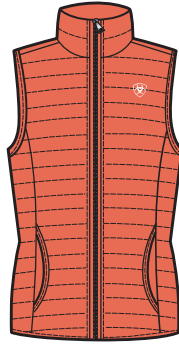
IDEAL DOWN® VEST

COLOUR Sweater Print
STYLE# 10023900

Packable down for the ultimate lightweight warmth • Packs easily in attached pouch

XS	S	M	L	XL	XXL
----	---	---	---	----	-----

NEW COLOUR



Available 8/15/18

IDEAL DOWN® VEST

COLOUR Calypso Coral
STYLE# 10023896

Packable down for the ultimate lightweight warmth • Packs easily in attached pouch

XS	S	M	L	XL	XXL
----	---	---	---	----	-----

NEW COLOUR



Available 8/15/18

IDEAL DOWN® VEST

COLOUR Atomic Blue
STYLE# 10023893

Packable down for the ultimate lightweight warmth • Packs easily in attached pouch

XS	S	M	L	XL	XXL
----	---	---	---	----	-----

NEW COLOUR



Available 8/15/18

VOLT JACKET

COLOUR Graphite
STYLE# 10023569

Featherweight quilted shell • Primaloft® Black Eco insulation • Cool Climate Insulation™ • Stretch fleece side panels • Zippered hand pockets • Two-way zipper

XS	S	M	L	XL
----	---	---	---	----

NEW COLOUR



Available 8/15/18

VOLT JACKET

COLOUR Salsa
STYLE# 10023570

Featherweight quilted shell • Primaloft® Black Eco insulation • Cool Climate Insulation™ • Stretch fleece side panels • Zippered hand pockets • Two-way zipper

XS	S	M	L	XL
----	---	---	---	----

NEW STYLE



Available 8/15/18

PERISCOPE PULLOVER

COLOUR Black Reflective
STYLE# 10023564

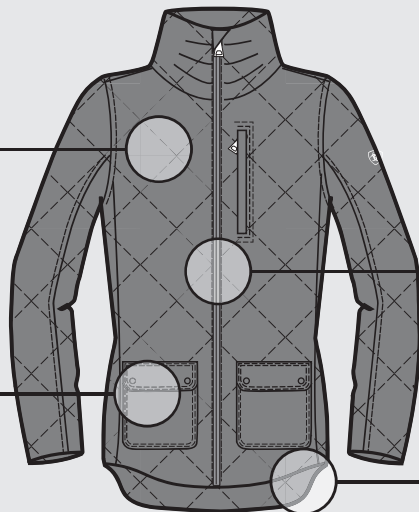
Wind and water resistant pop over • Reflective panelling • Dual zip at neck for easy over head • Mesh lining • Jersey side panels for comfort and mobility

XS	S	M	L	XL
----	---	---	---	----

PORTICO JACKET

Modern quilted shell with Cool Climate Insulation™

Patch two-way pockets



Two-way zipper

Saddle vents

NEW STYLE



Available 8/15/18

PORTICO JACKET

COLOUR Grey
STYLE# 10023786

Modern quilted shell with Cool Climate Insulation™ • Patch two-way pockets • Saddle vents • Two-way zipper

XS	S	M	L	XL	XXL
----	---	---	---	----	-----

NEW STYLE



Available 8/15/18
PORTICO VEST

COLOUR Grey
STYLE# 10023787

Modern quilted shell with Cool Climate Insulation™ • Patch two-way pockets • Saddle vents • Two-way zipper

XS	S	M	L	XL	XXL
----	---	---	---	----	-----

NEW COLOUR



Available 8/15/18
BRISK JACKET

COLOUR Teal Extreme
STYLE# 10023935

Chevron quilted shell body with lightweight Cool Climate Insulation™ • Softshell yoke and outer sleeve • Zippered hand pockets

XS	S	M	L	XL	XXL
----	---	---	---	----	-----

Check Availability
BRISK JACKET

COLOUR Black
STYLE# 10020382

Chevron quilted shell body with lightweight Cool Climate Insulation™ • Softshell yoke and outer sleeve • Zippered hand pockets

XS	S	M	L	XL	XXL
----	---	---	---	----	-----

NEW STYLE



Available 8/15/18
CYCLONE SOFTSHELL JACKET

COLOUR Black
STYLE# 10023562

Bonded mesh lining • Sleek performance styling

XS	S	M	L	XL
----	---	---	---	----

NEW STYLE



Available 8/15/18
FURY SOFTSHELL FULL ZIP

COLOUR Atomic Blue
STYLE# 10023788

Lightweight mesh softshell construction • Contrast panelling • Dropped hem

XS	S	M	L	XL
----	---	---	---	----

NEW STYLE



Available 8/15/18
FURY SOFTSHELL FULL ZIP

COLOUR Coastal Grey
STYLE# 10023789

Lightweight mesh softshell construction • Contrast panelling • Dropped hem

XS	S	M	L	XL
----	---	---	---	----

NEW STYLE



Available 8/15/18
TIAMO FULL ZIP

COLOUR Heather Grey
STYLE# 10023793

Scuba fleece • Moisture wicking • Wind resistant • Articulated sleeve design • Thumbholes

XS	S	M	L	XL
----	---	---	---	----

NEW STYLE



Available 8/15/18
TIAMO FULL ZIP

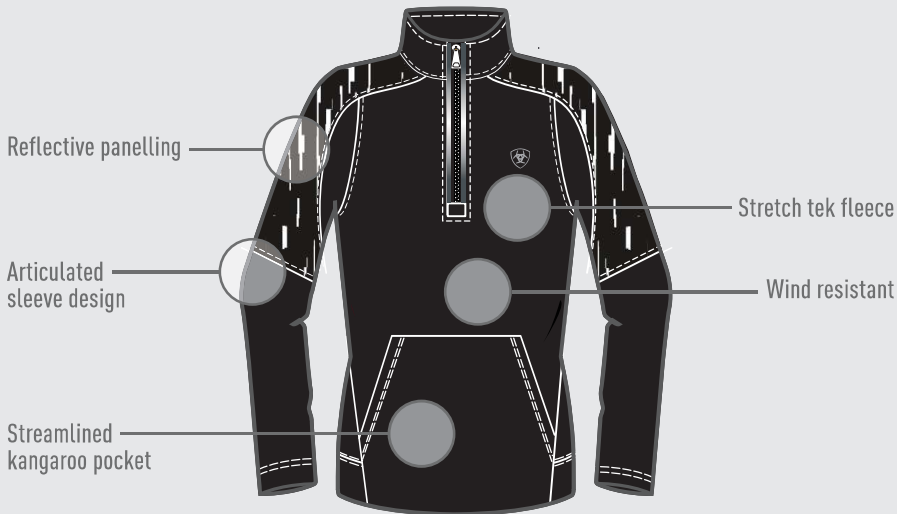
COLOUR Salsa
STYLE# 10023794

Scuba fleece • Moisture wicking • Wind resistant • Articulated sleeve design • Thumbholes

XS	S	M	L	XL
----	---	---	---	----

Hyper Reality

SONAR 1/2 ZIP



NEW STYLE



Available 8/15/18

SONAR 1/2 ZIP

COLOUR **Black Reflective**

STYLE# **10023790**

Streamlined kangaroo pocket • Stretch tek fleece • Wind resistant • Reflective panelling • Articulated sleeve design

XS	S	M	L	XL
----	---	---	---	----

NEW STYLE



Available 8/15/18

SONAR FULL ZIP

COLOUR **Black Reflective**

STYLE# **10023791**

Streamlined pockets with microcord pulls • Stretch tek fleece • Wind resistant • Reflective panelling • Articulated sleeve design

XS	S	M	L	XL
----	---	---	---	----

Check Availability

BASIS FULL ZIP

COLOUR **Black**

STYLE# **10020705**

Thick soft fleece • Zippered hand pockets • Princess seams

XS	S	M	L	XL	XXL
----	---	---	---	----	-----

NEW COLOUR



Available 8/15/18

BASIS FULL ZIP

COLOUR **Calypso Coral**

STYLE# **10023541**

Thick soft fleece • Zippered hand pockets • Princess seams

XS	S	M	L	XL	XXL
----	---	---	---	----	-----

NEW COLOUR



Available 8/15/18

CONQUEST 1/2 ZIP

COLOUR **Atomic Blue**

STYLE# **10023559**

Stretch tek fleece • Moisture wicking • Mock collar

XS	S	M	L	XL
----	---	---	---	----

Check Availability

CONQUEST 1/2 ZIP

COLOUR **Ebony**

STYLE# **10020727**

Stretch tek fleece • Moisture wicking • Mock collar

XS	S	M	L	XL
----	---	---	---	----

NEW COLOUR



Available 8/15/18

CONQUEST 1/2 ZIP

COLOUR **Salsa**

STYLE# **10023560**

Stretch tek fleece • Moisture wicking • Mock collar

XS	S	M	L	XL
----	---	---	---	----



Check Availability

CONQUEST VEST

COLOUR **Ebony**
STYLE# **10020748**

Stretch tek fleece • Moisture wicking • Zippered hand pockets • Mock collar

XS	S	M	L	XL
----	---	---	---	----



NEW COLOUR



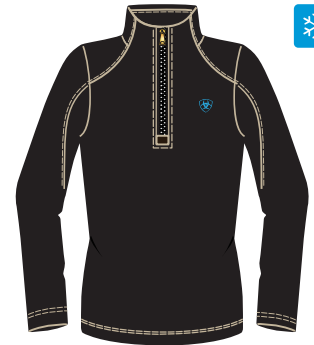
Available 8/15/18

CONQUEST VEST

COLOUR **Salsa**
STYLE# **10023561**

Stretch tek fleece • Moisture wicking • Zippered hand pockets • Mock collar

XS	S	M	L	XL
----	---	---	---	----



Check Availability

CADENCE WOOL 1/4 ZIP

COLOUR **Black**
STYLE# **10015725**

100% washable Merino wool • Mesh inserts for breathability • Lightweight • Base layer fabric • Mock collar

XS	S	M	L	XL
----	---	---	---	----



NEW COLOUR



Available 8/15/18

CADENCE WOOL 1/4 ZIP

COLOUR **Salsa**
STYLE# **10023555**

100% washable Merino wool • Mesh inserts for breathability • Lightweight • Base layer fabric • Mock collar

XS	S	M	L	XL
----	---	---	---	----



NEW COLOUR



Available 8/15/18

CADENCE WOOL 1/4 ZIP

COLOUR **Teal Extreme**
STYLE# **10023556**

100% washable Merino wool • Mesh inserts for breathability • Lightweight • Base layer fabric • Mock collar

XS	S	M	L	XL
----	---	---	---	----



NEW STYLE



Available 8/15/18

ODYSSEY 2.0 1/4 ZIP

COLOUR **Atomic Blue Heather**
STYLE# **10023771**

Seamless non-chafing design • Enhancing patterning across shoulders/arms • Body-mapped jersey fabric • Mock collar

S	M	L
---	---	---



NEW STYLE



Available 8/15/18

ODYSSEY 2.0 1/4 ZIP

COLOUR **Grey Heather**
STYLE# **10023772**

Seamless non-chafing design • Enhancing patterning across shoulders/arms • Body-mapped jersey fabric • Mock collar

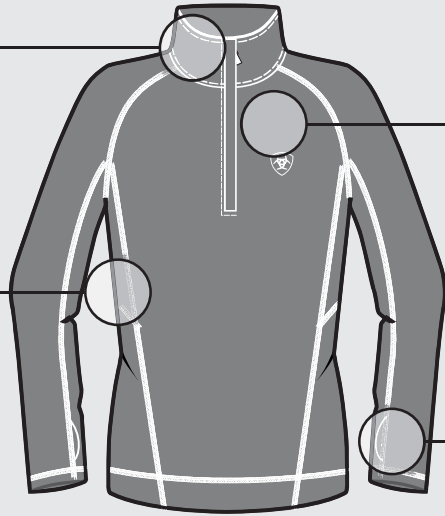
S	M	L
---	---	---

Hyper Reality

LOWELL 2.0 1/4 ZIP

Mock collar

Sporty styling with flattering panelling



Brushed stretch jersey

Ergonomic thumbholes

NEW STYLE



Available 8/15/18

LOWELL 2.0 1/4 ZIP

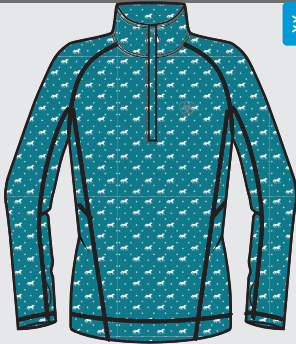
COLOUR Coastal Grey

STYLE# 10023765

Sporty styling with flattering panelling • Brushed stretch jersey • Ergonomic thumbholes • Mock collar

XS	S	M	L	XL
----	---	---	---	----

NEW STYLE



Available 8/15/18

LOWELL 2.0 1/4 ZIP

COLOUR Atomic Blue Running Horse

STYLE# 10023770

Sporty styling with flattering panelling • Brushed stretch jersey • Ergonomic thumbholes • Mock collar

XS	S	M	L	XL
----	---	---	---	----

NEW STYLE



Available 8/15/18

LOWELL 2.0 1/4 ZIP

COLOUR Black

STYLE# 10023763

Sporty styling with flattering panelling • Brushed stretch jersey • Ergonomic thumbholes • Mock collar

XS	S	M	L	XL
----	---	---	---	----

NEW STYLE



Available 8/15/18

LOWELL 2.0 1/4 ZIP

COLOUR Calypso Coral

STYLE# 10023764

Sporty styling with flattering panelling • Brushed stretch jersey • Ergonomic thumbholes • Mock collar

XS	S	M	L	XL
----	---	---	---	----

NEW STYLE



Available 8/15/18

LOWELL 2.0 1/4 ZIP

COLOUR Navy

STYLE# 10023766

Sporty styling with flattering panelling • Brushed stretch jersey • Ergonomic thumbholes • Mock collar

XS	S	M	L	XL
----	---	---	---	----

NEW STYLE



Available 8/15/18

LOWELL 2.0 1/4 ZIP

COLOUR Salsa

STYLE# 10023767

Sporty styling with flattering panelling • Brushed stretch jersey • Ergonomic thumbholes • Mock collar

XS	S	M	L	XL
----	---	---	---	----

NEW STYLE



Available 8/15/18

LOWELL 2.0 1/4 ZIP

COLOUR White

STYLE# 10023769

Sporty styling with flattering panelling • Brushed stretch jersey • Ergonomic thumbholes • Mock collar

XS	S	M	L	XL
----	---	---	---	----

NEW COLOR



Available 8/15/18

CAMBRIA LOGO LONG SLEEVE CREW

COLOUR Calypso Coral
STYLE# 10023558

Stretch tek jersey crew • Breathable mesh underarm panelling • Sun Protection Fabric™

XS	S	M	L	XL
----	---	---	---	----

NEW COLOR



Check Availability

CAMBRIA LOGO LONG SLEEVE CREW

COLOUR Navy
STYLE# 10019191

Stretch tek jersey crew • Breathable mesh underarm panelling • Sun Protection Fabric™

XS	S	M	L	XL
----	---	---	---	----

NEW COLOR



Available 8/15/18

RAMIRO SWEATER

COLOUR Teal Extreme
STYLE# 10023797

100% Merino wool flat knit • Machine washable • Easy to layer V-neckline

XS	S	M	L	XL
----	---	---	---	----



Replenishment

PRIX POLO

COLOUR Black
STYLE# 10008970

Performance stretch pique • Flat knit rib collar • Extended placket • Logo buttons and embroidery

XS	S	M	L	XL
----	---	---	---	----



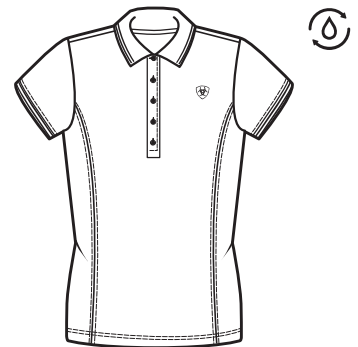
Replenishment

PRIX POLO

COLOUR Navy Eclipse
STYLE# 10008971

Performance stretch pique • Flat knit rib collar • Extended placket • Logo buttons and embroidery

XS	S	M	L	XL
----	---	---	---	----



Replenishment

PRIX POLO

COLOUR White
STYLE# 10008979

Performance stretch pique • Flat knit rib collar • Extended placket • Logo buttons and embroidery

XS	S	M	L	XL
----	---	---	---	----



Check Availability

PRIX POLO

COLOUR Heather Grey
STYLE# 10019215

Performance stretch pique • Flat knit rib collar • Extended placket • Logo buttons and embroidery

XS	S	M	L	XL
----	---	---	---	----

NEW COLOR



Available 1/15/18

PRIX SLEEVELESS POLO

COLOUR Black
STYLE# 10022188

Performance stretch pique • Flat knit rib collar • Extended placket • Logo buttons and embroidery

XS	S	M	L	XL
----	---	---	---	----

NEW COLOR



Check Availability

PRIX SLEEVELESS POLO

COLOUR Navy Eclipse
STYLE# 10008975

Performance stretch pique • Flat knit rib collar • Extended placket • Logo buttons and embroidery

XS	S	M	L	XL
----	---	---	---	----

Hyper Reality

NEW STYLE



Available 8/15/18

LOGO TEE

COLOUR **Atomic Blue**

STYLE# **10023760**

XS	S	M	L	XL
----	---	---	---	----





PHILOSOPHER

09/30/18 Collection

BRAZE PERFORMANCE DOWN JACKET



NEW STYLE

Athlete Pick



Available 10/2/18

BRAZE PERFORMANCE DOWN JACKET

COLOUR Team
STYLE# 10023838

Performance Stretch • Welded down construction • Double-stacked pockets • Fleece storm cuffs • Two-way zipper

XS	S	M	L	XL
----	---	---	---	----

NEW STYLE

Athlete Pick



Available 10/2/18

BRAZE PERFORMANCE DOWN JACKET

COLOUR Black
STYLE# 10023837

Performance Stretch • Welded down construction • Double-stacked pockets • Fleece storm cuffs • Two-way zipper

XS	S	M	L	XL
----	---	---	---	----

NEW COLOUR



Available 10/2/18

IDEAL DOWN® JACKET

COLOUR Grisblue
STYLE# 10023831

Packable down for the ultimate lightweight warmth • Packs easily in attached pouch

XS	S	M	L	XL	XXL
----	---	---	---	----	-----

NEW COLOUR



Available 10/2/18

IDEAL DOWN® JACKET

COLOUR Liquorice Root
STYLE# 10023832

Packable down for the ultimate lightweight warmth • Packs easily in attached pouch

XS	S	M	L	XL	XXL
----	---	---	---	----	-----

NEW COLOUR



Available 10/2/18

IDEAL DOWN® VEST

COLOUR Beatroute
STYLE# 10023894

Packable down for the ultimate lightweight warmth • Packs easily in attached pouch

XS	S	M	L	XL	XXL
----	---	---	---	----	-----

NEW COLOUR



Available 10/2/18

IDEAL DOWN® VEST

COLOUR Overall Navy
STYLE# 10023898

Packable down for the ultimate lightweight warmth • Packs easily in attached pouch

XS	S	M	L	XL	XXL
----	---	---	---	----	-----

NEW COLOUR



Available 10/2/18

IDEAL DOWN® VEST

COLOUR Liquorice Root
STYLE# 10023897

Packable down for the ultimate lightweight warmth • Packs easily in attached pouch

XS	S	M	L	XL	XXL
----	---	---	---	----	-----

PHILOSOPHER

Philosopher

NEW STYLE



Available 10/2/18

PORTICO JACKET

COLOUR Overall Navy
STYLE# 10023834

Modern quilted shell with Cool Climate Insulation™ • Patch two-way pockets • Saddle vents • Two-way zipper

XS	S	M	L	XL	XXL
----	---	---	---	----	-----

NEW STYLE



Available 10/2/18

PORTICO VEST

COLOUR Overall Navy
STYLE# 10023835

Modern quilted shell with Cool Climate Insulation™ • Patch two-way pockets • Saddle vents • Two-way zipper

XS	S	M	L	XL	XXL
----	---	---	---	----	-----

NEW STYLE



Available 10/2/18

ALPINE JACKET

COLOUR Black
STYLE# 10023932

Quilted Cool Climate Insulation™ with printed lining • Detachable fur collar • Zippered hand pockets

XS	S	M	L	XL	XXL
----	---	---	---	----	-----

NEW STYLE



Available 10/2/18

CYCLONE SOFTSHELL JACKET

COLOUR Deep Tide
STYLE# 10023839

Bonded mesh lining • Sleek performance styling

XS	S	M	L	XL
----	---	---	---	----

NEW STYLE



Available 10/2/18

VANQUISH FULL ZIP

COLOUR Ebony
STYLE# 10023826

Space dye stretch pique fleece • Lightweight Cool Climate Insulation™ • Embossed taffeta lining • Cosy tall collar • Flattering asymmetric zip

XS	S	M	L	XL
----	---	---	---	----

NEW STYLE



Available 10/2/18

SOVEREIGN FULL ZIP

COLOUR Dark Denim
STYLE# 10023823

Bonded sweater knit • Standing collar • Raglan styling with flattering seams

XS	S	M	L	XL
----	---	---	---	----

NEW STYLE



Available 10/2/18

SOVEREIGN FULL ZIP

COLOUR Heather Grey
STYLE# 10023824

Bonded sweater knit • Standing collar • Raglan styling with flattering seams

XS	S	M	L	XL
----	---	---	---	----

NEW COLOUR



Available 10/2/18

BASIS FULL ZIP

COLOUR Liquorice Root
STYLE# 10023827

Thick, soft fleece • Zippered hand pockets • Princess seams

XS	S	M	L	XL	XXL
----	---	---	---	----	-----

NEW COLOUR



Check Availability

BASIS FULL ZIP

COLOUR Navy
STYLE# 10020711

Thick, soft fleece • Zippered hand pockets • Princess seams

XS	S	M	L	XL	XXL
----	---	---	---	----	-----

NEW COLOUR



Available 10/2/18
CONQUEST 1/2 ZIP

COLOUR Dark Denim
STYLE# 10023828

Stretch tek fleece • Moisture wicking • Mock collar

XS	S	M	L	XL
----	---	---	---	----

NEW COLOUR



Available 10/2/18
CONQUEST 1/2 ZIP

COLOUR Plaster
STYLE# 10023829

Stretch tek fleece • Moisture wicking • Mock collar

XS	S	M	L	XL
----	---	---	---	----

NEW COLOUR



Available 10/2/18
CONQUEST VEST

COLOUR Dark Denim
STYLE# 10023830

Stretch tek fleece • Moisture wicking • Zippered hand pockets • Mock collar

XS	S	M	L	XL
----	---	---	---	----

NEW COLOUR



Available 10/2/18
CADENCE WOOL 1/4 ZIP

COLOUR Beatroute
STYLE# 10023811

100% washable Merino wool • Mesh inserts for breathability • Lightweight • Base layer fabric • Mock collar

XS	S	M	L	XL
----	---	---	---	----

NEW COLOUR



Available 10/2/18
GRIDWORK 1/4 ZIP

COLOUR Deep Tide
STYLE# 10023812

Grid pattern fleece back to create airflow • MMT™ finish for moisture movement

XS	S	M	L	XL
----	---	---	---	----

NEW COLOUR



Available 10/2/18
GRIDWORK 1/4 ZIP

COLOUR Liquorice Root
STYLE# 10023813

Grid pattern fleece back to create airflow • MMT™ finish for moisture movement

XS	S	M	L	XL
----	---	---	---	----

NEW STYLE



Available 10/2/18
LOWELL 2.0 1/4 ZIP

COLOUR Beatroute
STYLE# 10023814

Sporty styling with flattering panelling • Brushed stretch jersey • Ergonomic thumbholes • Mock collar

XS	S	M	L	XL
----	---	---	---	----

NEW STYLE



Available 10/2/18
LOWELL 2.0 1/4 ZIP

COLOUR Flow Print
STYLE# 10023815

Sporty styling with flattering panelling • Brushed stretch jersey • Ergonomic thumbholes • Mock collar

XS	S	M	L	XL
----	---	---	---	----

NEW STYLE



Available 10/2/18
LOWELL 2.0 1/4 ZIP

COLOUR Grisblue
STYLE# 10023816

Sporty styling with flattering panelling • Brushed stretch jersey • Ergonomic thumbholes • Mock collar

XS	S	M	L	XL
----	---	---	---	----

Philosopher

NEW STYLE



Available 10/2/18
LOWELL 2.0 1/4 ZIP

COLOUR Liquorice Running Horse
STYLE# 10023817

Sporty styling with flattering panelling • Brushed stretch jersey • Ergonomic thumbholes • Mock collar

XS	S	M	L	XL
----	---	---	---	----

NEW STYLE



Available 10/2/18
PENNANT BASE LAYER

COLOUR Beatroute Ombre
STYLE# 10023773

Stretch tek jersey • Flattering contemporary collar • Ombre dye effect

XS	S	M	L	XL
----	---	---	---	----

NEW STYLE



Available 10/2/18
PENNANT BASE LAYER

COLOUR Navy Ombre
STYLE# 10023774

Stretch tek jersey • Flattering contemporary collar • Ombre dye effect

XS	S	M	L	XL
----	---	---	---	----

NEW COLOUR



Available 10/2/18
RAMIRO SWEATER

COLOUR Dark Denim
STYLE# 10023841

100% Merino wool flat knit • Machine washable • Easy to layer V-neckline

XS	S	M	L	XL
----	---	---	---	----

NEW STYLE



Available 10/2/18
LOGO TEE

COLOUR Deep Tide
STYLE# 10023819

XS	S	M	L	XL
----	---	---	---	----

NEW STYLE



Available 10/2/18
LOGO TEE

COLOUR Heather Grey
STYLE# 10023820

XS	S	M	L	XL
----	---	---	---	----





TEAM APPAREL



NEW STYLE



Available 9/30/18
BRAZE PERFORMANCE DOWN JACKET

COLOUR Team
STYLE# 10023838

Performance Stretch • Welded down construction • Double-stacked pockets • Fleece storm cuffs • Two-way zipper

XS	S	M	L	XL
----	---	---	---	----



Check Availability
TEAM II WATERPROOF JACKET

COLOUR Navy
STYLE# 10016839

Waterproof shell • Seam sealed • Contrast trims and details • Removable hood • Back saddle vents • Zippered hand and chest pockets • Two-way zipper

XS	S	M	L	XL
----	---	---	---	----



Available 1/15/18
CAPISTRANO JACKET

COLOUR Team
STYLE# 10022200

Featherweight quilted shell • Cool Climate Insulation™ • Tek knit side panels and sleeves • Stand collar • Zippered hand pockets • Binding at cuff and hem

XS	S	M	L	XL	XXL
----	---	---	---	----	-----



Available 1/15/18
IDEAL WINDBREAKER JACKET

COLOUR Team
STYLE# 10022220

Lightweight nylon shell • Wind and water resistant • Jersey insets for better movement • Flattering fit • Breathable • Pocket doubles as a stow bag

XS	S	M	L	XL	XXL
----	---	---	---	----	-----



Available 8/15/18
NEW TEAM SOFTSHELL JACKET

COLOUR Beatroute
STYLE# 10023833

Softshell with microfleece backing • Mock collar • Updated colourblock detailing • Zippered hand pockets • Ariat® branding

XS	S	M	L	XL	XXL
----	---	---	---	----	-----



Replenishment
NEW TEAM SOFTSHELL JACKET

COLOUR Navy
STYLE# 10019208

Softshell with microfleece backing • Updated colourblock detailing • Stand collar • Zippered hand pockets • Ariat® branding

XS	S	M	L	XL	XXL
----	---	---	---	----	-----



Replenishment
NEW TEAM SOFTSHELL JACKET

COLOUR Black
STYLE# 10019206

Softshell with microfleece backing • Updated colourblock detailing • Stand collar • Zippered hand pockets • Ariat® branding

XS	S	M	L	XL	XXL
----	---	---	---	----	-----



Available 8/15/18
NEW TEAM SOFTSHELL JACKET

COLOUR Graphite Heather
STYLE# 10023782

Softshell with microfleece backing • Mock collar • Updated colourblock detailing • Zippered hand pockets • Ariat® branding

XS	S	M	L	XL	XXL
----	---	---	---	----	-----



Check Availability
NEW TEAM SOFTSHELL VEST

COLOUR Navy
STYLE# 10020765

Softshell with microfleece backing • Stand collar • Zippered hand pockets • Ariat® branding

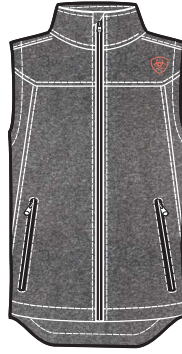
XS	S	M	L	XL	XXL
----	---	---	---	----	-----

TEAM APPAREL

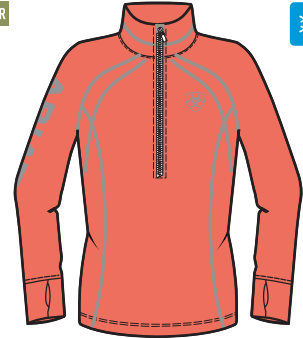
Team Apparel



NEW COLOUR



NEW COLOUR



Check Availability

NEW TEAM SOFTSHELL VEST

COLOUR Black
STYLE# 10020762

Softshell with microfleece backing • Stand collar • Zippered hand pockets • Ariat® branding

XS	S	M	L	XL	XXL
----	---	---	---	----	-----

Available 9/30/18

NEW TEAM SOFTSHELL VEST

COLOUR Graphite Heather
STYLE# 10023783

Softshell with microfleece backing • Mock collar • Updated colorblock detailing • Zippered hand pockets • Ariat® branding

XS	S	M	L	XL	XXL
----	---	---	---	----	-----

Available 8/15/18

TEK TEAM 1/2 ZIP

COLOUR Calypso Coral
STYLE# 10023792

Brushed fleece • Logo embroidery • Thumbholes

XS	S	M	L	XL	XXL
----	---	---	---	----	-----



Replenishment

TEK TEAM 1/2 ZIP

COLOUR Navy
STYLE# 10011282

Brushed fleece • Logo embroidery • Thumbholes

XS	S	M	L	XL	XXL
----	---	---	---	----	-----

NEW COLOUR



Available 8/15/18

CADENCE WOOL 1/4 ZIP

COLOUR Team
STYLE# 10023557

100% washable Merino wool • Mesh inserts for breathability • Lightweight, base layer fabric • Mock collar

XS	S	M	L	XL
----	---	---	---	----

Athlete Pick



Available 1/15/18

TRI FACTOR 1/4 ZIP

COLOUR Team
STYLE# 10022266

Performance jersey fabric • Icefil® cooling technology • Sun Protection Fabric™ • 1/4 zip styling • Mock collar

XS	S	M	L	XL
----	---	---	---	----

NEW STYLE

Athlete Pick



Available 8/15/18

LOWELL 2.0 1/4 ZIP

COLOUR Team
STYLE# 10023768

Sporty styling with flattering panelling • Brushed stretch jersey • Ergonomic thumbholes • Mock collar

XS	S	M	L	XL
----	---	---	---	----

NEW COLOUR



Replenishment

TEAM SUNSTOPPER 1/4 ZIP

COLOUR Navy
STYLE# 10016771

Lightweight pique knit • Sun Protection Fabric™ • Stand collar • Breathable mesh underarm panelling • Colourblock detailing

XS	S	M	L	XL
----	---	---	---	----

Athlete Pick



Available 1/15/18

CAMBRIA JERSEY

COLOUR Navy
STYLE# 10022181

Stretch tek jersey • Contemporary shaped collar • Breathable mesh at full back and side panelling

XS	S	M	L	XL
----	---	---	---	----



Replenishment
NEW TEAM POLO

COLOUR **Black**
STYLE# **10019198**

Performance stretch pique • Flat knit rib collar •
Colourblocked shoulder panels • Logo buttons
and embroidery

XS	S	M	L	XL
----	---	---	---	----



Replenishment
NEW TEAM POLO

COLOUR **Navy**
STYLE# **10019199**

Performance stretch pique • Flat knit rib collar •
Colourblocked shoulder panels • Logo buttons
and embroidery

XS	S	M	L	XL
----	---	---	---	----



Replenishment
NEW TEAM POLO

COLOUR **White**
STYLE# **10019200**

Performance stretch pique • Flat knit rib collar •
Colourblocked shoulder panels • Logo buttons
and embroidery

XS	S	M	L	XL
----	---	---	---	----



SHOW APPAREL

Athlete Pick



Check Availability
PLATINUM SHOW COAT

COLOUR **Black**
STYLE# **10012207**

Stretch softshell • Double vent • Fully lined with upper mesh and twill lower • Metal logo button closure • Machine washable

(UK)	2 (6)	4 (8)	6 (10)	8 (12)	10 (14)	12 (16)	14 (18)
R							
L							

Athlete Pick



Check Availability
PLATINUM SHOW COAT

COLOUR **Navy**
STYLE# **10014736**

Stretch softshell • Double vent • Fully lined with upper mesh and twill lower • Metal logo button closure • Machine washable

(UK)	2 (6)	4 (8)	6 (10)	8 (12)	10 (14)	12 (16)	14 (18)
R							
L							

Athlete Pick



Replenishment
ARTICO LIGHTWEIGHT SHOW COAT

COLOUR **Black**
STYLE# **10019163**

Nylon/spandex ultra-light, ultra-stretch fabric • Interchangeable silver and tonal buttons • Unlined wicking performance • Hidden zipper under button placket • Contrast logo trims • Machine washable

(UK)	2 (6)	4 (8)	6 (10)	8 (12)	10 (14)	12 (16)	14 (18)
R							
L							

Athlete Pick



Replenishment
ARTICO LIGHTWEIGHT SHOW COAT

COLOUR **Grey**
STYLE# **10019164**

Nylon/spandex ultra-light, ultra-stretch fabric • Interchangeable silver and tonal buttons • Unlined wicking performance • Hidden zipper under button placket • Contrast logo trims • Machine washable

(UK)	2 (6)	4 (8)	6 (10)	8 (12)	10 (14)	12 (16)	14 (18)
R							
L							

Athlete Pick



Replenishment
ARTICO LIGHTWEIGHT SHOW COAT

COLOUR **Navy**
STYLE# **10019165**

Nylon/spandex ultra-light, ultra-stretch fabric • Interchangeable silver and tonal buttons • Unlined wicking performance • Hidden zipper under button placket • Contrast logo trims • Machine washable

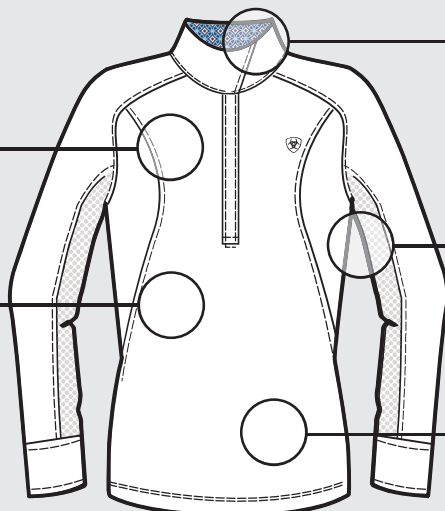
(UK)	2 (6)	4 (8)	6 (10)	8 (12)	10 (14)	12 (16)	14 (18)
R							
L							

MARQUIS SHOW SHIRT

New Fall Styles!

Premium micro tek knit fabric

Icefil® technology for active cooling



Wrap show collar with magnetic closure

Floral mesh insets under arm

Sun Protection Fabric™

NEW COLOUR

Athlete Pick



Available 8/15/18
MARQUIS SHOW SHIRT

COLOUR **Saltman**
STYLE# **10023799**

Premium micro tek knit fabric • Icefil® technology for active cooling • Sun Protection Fabric™ • Floral mesh insets under arm • White styles have print trim at collar and cuff • Wrap show collar with magnetic closure

XS	S	M	L	XL
----	---	---	---	----

SHOW APPAREL

Show Apparel



Available 8/15/18

MARQUIS SHOW SHIRT

COLOUR Stackman

STYLE# 10023800

Premium micro tek knit fabric • Icefil® technology for active cooling • Sun Protection Fabric™ • Floral mesh insets under arm • White styles have print trim at collar and cuff • Wrap show collar with magnetic closure

XS	S	M	L	XL
----	---	---	---	----



Available 1/15/18

MARQUIS SHOW SHIRT

COLOUR Blue Cloud Stripe

STYLE# 10022222

Premium micro tek knit fabric • Icefil® technology for active cooling • Sun Protection Fabric™ • Floral mesh insets under arm • White styles have print trim at collar and cuff • Wrap show collar with magnetic closure

XS	S	M	L	XL
----	---	---	---	----



Available 1/15/18

MARQUIS SHOW SHIRT

COLOUR White Mesh

STYLE# 10022439

Premium micro tek knit fabric • Icefil® technology for active cooling • Sun Protection Fabric™ • Floral mesh insets under arm • White styles have print trim at collar and cuff • Wrap show collar with magnetic closure

XS	S	M	L	XL
----	---	---	---	----



Available 1/15/18

MARQUIS SHOW SHIRT

COLOUR White/Purple Print

STYLE# 10022224

Premium micro tek knit fabric • Icefil® technology for active cooling • Sun Protection Fabric™ • Floral mesh insets under arm • White styles have print trim at collar and cuff • Wrap show collar with magnetic closure

XS	S	M	L	XL
----	---	---	---	----



Available 1/15/18

MARQUIS SHOW SHIRT

COLOUR Blue Cloud Stripe

STYLE# 10022225

Premium micro tek knit fabric • Icefil® technology for active cooling • Sun Protection Fabric™ • Floral mesh insets under arm • White styles have print trim at collar and cuff • Wrap show collar with magnetic closure

XS	S	M	L	XL
----	---	---	---	----



Available 1/15/18

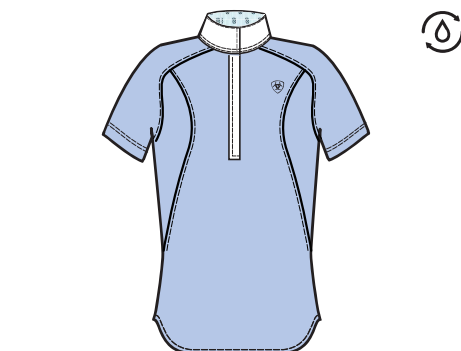
MARQUIS SHOW SHIRT

COLOUR White

STYLE# 10022229

Premium micro tek knit fabric • Icefil® technology for active cooling • Sun Protection Fabric™ • Floral mesh insets under arm • White styles have print trim at collar and cuff • Wrap show collar with magnetic closure

XS	S	M	L	XL
----	---	---	---	----



Available 1/15/18

HEX SHOWSTOPPER SHOW SHIRT

COLOUR Blue Cloud

STYLE# 10022215

Lightweight poly/spandex jacquard knit • Show collar • Placket with snap closures • Stock tie loop

XS	S	M	L	XL
----	---	---	---	----



Available 1/15/18

APTOS VENT SHOW SHIRT

COLOUR Grey

STYLE# 10022427

Poly/spandex blend pique • Vent structure • Show collar • Placket with snap closures • Stock tie loop

XS	S	M	L	XL
----	---	---	---	----



Available 1/15/18

APTOS VENT SHOW SHIRT

COLOUR Purple Heather

STYLE# 10022429

Poly/spandex blend pique • Vent structure • Show collar • Placket with snap closures • Stock tie loop

XS	S	M	L	XL
----	---	---	---	----

Athlete Pick



Check Availability

APTOS VENT SHOW SHIRT

COLOUR White
STYLE# 10019314

Poly/spandex blend pique • Vent structure • Show collar • Placket with snap closures • Stock tie loop

XS	S	M	L	XL
----	---	---	---	----

Athlete Pick



Check Availability

APTOS COLOURBLOCK SHOW SHIRT

COLOUR White/Navy
STYLE# 10019170

Poly/spandex blend pique • Show collar • Placket with snap closures • Stock tie loop

XS	S	M	L	XL
----	---	---	---	----

Available 1/15/18

APTOS COLOURBLOCK SLEEVELESS SHIRT

COLOUR White/Plum Perfect
STYLE# 10022174

Poly/spandex blend pique • Show collar • Placket with snap closures • Stock tie loop

XS	S	M	L	XL
----	---	---	---	----



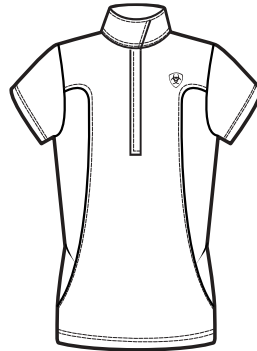
Available 3/15/18

APTOS COLOURBLOCK SHOW SHIRT

COLOUR White/Plum Perfect
STYLE# 10022423

Poly/spandex blend pique • Show collar • Placket with snap closures • Stock tie loop

XS	S	M	L	XL
----	---	---	---	----



Replenishment

APTOS SHOW SHIRT

COLOUR White
STYLE# 10008992

Poly/spandex blend pique • Show collar • Placket with snap closures • Stock tie loop

XS	S	M	L	XL
----	---	---	---	----

Check Availability

APTOS SLEEVELESS SHOW SHIRT

COLOUR White
STYLE# 10009004

Poly/spandex blend pique • Show collar • Placket with snap closures • Stock tie loop

XS	S	M	L	XL
----	---	---	---	----



Replenishment

SUNSTOPPER SHOW SHIRT

COLOUR White
STYLE# 10012647

Lightweight pique knit • Sun Protection Fabric™ • Woven wrap collar • Breathable mesh underarm panelling • Snap placket closure • Stock tie loop

XS	S	M	L	XL
----	---	---	---	----

SHOW APPAREL



BREECHES

Fine Fabric & Impeccable Fit

A BREECH FOR EVERY RIDER

Engineered to meet the needs of every rider—from equine enthusiasts to professional athletes. With 3 levels to choose from, we have a selection of styles and technical fabrics to go from school to show.

GOLD

Superior fabrics and construction designed specifically to meet the rigorous demands of the professional rider.

- // Optimal performance and style
- // Highest level of technology
- // Exceptional detailing

SILVER

The ideal choice for most avid riders, both for everyday use and the show ring.

- // Elegance & performance
- // Versatile mid-level technology
- // Exceptional detailing

BRONZE

Excellent comfort and quality at an exceptional value—ideal for entry-level riders.

- // Everyday great comfort at a great value
- // Versatile & exceptional value

The Ariat® Olympia Breech is designed to meet the exacting requirements of our top performing riders worldwide.

FEATURES

- // Premium, Schoeller®-dryskin micro-nylon twill for softness and comfort
- // Core Control Technology™ (CCT™)
- // Patented V3® Fit System in waist
- // Calf Fit System™ (CFS™)
- // Bluesign® fabric meets strict environmental standards
- // Classic fit



OLYMPIA ACCLAIM REGULAR RISE FULL SEAT

Athlete Pick

FEATURES Schoeller®-prestige four-way stretch nylon and cotton fabric • Stretch Clarino™ full seat • Faux back pocket • Contrast colour detailing at front and back pockets • Performance mesh calf panels



	22	24	26	28	30	32	34	36
R								
L								

COLOURS



Available 8/15/18

NEW COLOUR

COLOUR **Black**
STYLE # 10023780



Check Availability

COLOUR **Team Navy**
STYLE # 10016831

BREECHES

The Olympia Breech



OLYMPIA GRIP REGULAR RISE FULL SEAT

FEATURES Schoeller®-prestige four-way stretch nylon and cotton fabric • Ariat® Hex Silicone Grip full seat • Iconic double slash front pockets • Logo detail



	22	24	26	28	30	32	34	36
R								
L								

COLOURS



Available 1/15/18

COLOUR **Ebony**

STYLE # **10022284**



Available 1/15/18

COLOUR **Tan**

STYLE # **10022288**



Available 1/15/18

COLOUR **Navy**

STYLE # **10022242**



OLYMPIA REGULAR RISE FULL SEAT

FEATURES Schoeller®-prestige four-way stretch nylon and cotton twill • Stain-repellent NanoSphere® finish • Stretch Clarino™ • Iconic look of double front pockets



	22	24	26	28	30	32	34	36
R								
L								

Athlete Pick

COLOURS



Check Availability

COLOUR **White**

STYLE # **10012571**



Check Availability

COLOUR **Tan**

STYLE # **10002346**



Check Availability

COLOUR **Navy**

STYLE # **10005606**



Check Availability

COLOUR **Black**

STYLE # **10008712**

The Ariat® Ranier Grip Breech is designed for winter riding with the warmth of fleece backing and reflective piping to keep you safe in the dark.

FEATURES

- // Stretch softshell with microfleece backing
- // Reflective piping
- // Ariat® Hex Silicone Grip full seat/knee patch
- // Patented V3® Fit System
- // Core Control Technology™ (CCT™)



RANIER GRIP KNEE PATCH

NEW STYLE

FEATURES Stretch softshell with fleece backing • Ariat® Hex Grip knee patch • Reflective piping



	22	24	26	28	30	32	34	36
R								
L								

COLOURS

Available 9/30/18 NEW COLOUR

COLOUR **Black**

STYLE # **10023809**

Available 9/30/18

COLOUR **Tan**

STYLE # **10023810**

BREECHES

The Ranier Grip Breech



RANIER GRIP FULL SEAT

NEW STYLE

FEATURES Stretch softshell with fleece backing • Ariat® Hex Grip full seat • Reflective piping



	22	24	26	28	30	32	34	36
R								
L								

COLOURS



Available 9/30/18

COLOUR **Black**

STYLE # **10023807**



Available 9/30/18

COLOUR **Tan**

STYLE # **10023808**

The Ariat® Tri Factor Breech

Compressive fabrication infused with cooling technology to keep you cool and collected. Silicone grip where you need it.

FEATURES

- // Mid-weight stretch knit
- // Compression performance
- // Icefil® cooling system
- // Ariat® Hex Silicone Grip full seat/knee patch
- // Patented V3° Fit System
- // Calf Fit System™ (CFS™)
- // Core Control Technology™ (CCT™)
- // Moisture Movement Technology™ (MMT™)



TRI FACTOR GRIP KNEE PATCH

FEATURES Mid-weight stretch knit • Icefil® cooling technology • Compression performance • Ariat® Hex Silicone Grip knee patch • Euro seat • Faux back flap pockets • Distinctive logo trim



icefil

COLOURS

Available 1/15/18

COLOUR **Navy**

STYLE # **10021779**

Available 1/15/18

COLOUR **Tan**

STYLE # **10021780**

	22	24	26	28	30	32	34	36
R								
L								

Athlete Pick

BREECHES

The Tri Factor Breech



TRI FACTOR GRIP FULL SEAT

FEATURES Mid-weight stretch knit • Icefil® cooling technology • Compression performance • Ariat® Hex Silicone Grip full seat • 75% nylon, 25% spandex



icefil

COLOURS



Available 1/15/18

COLOUR **Navy**
STYLE # **10021776**



Available 1/15/18

COLOUR **White**
STYLE # **10021778**



Available 1/15/18

COLOUR **Tan**
STYLE # **10021777**

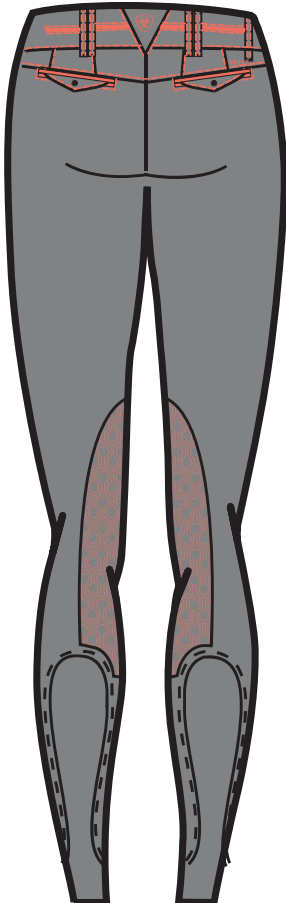
	22	24	26	28	30	32	34	36
R								
L								

The Ariat® Heritage Elite Breech

Impeccably made for an unparalleled ride.

FEATURES

- // Premium four-way performance stretch nylon and cotton blend fabric
- // Stain-repellent finish
- // Patented V3® Fit System in waist
- // Calf Fit System™ (CFS™) Italian mesh calf panels
- // Core Control Technology™ (CCT™)
- // European slim fit



HERITAGE ELITE GRIP KNEE PATCH

NEW STYLE

FEATURES Four-way performance stretch nylon/cotton blend fabric • Stain-repellent NanoSphere® finish • Ariat® Hex Grip knee patch • Performance mesh calf panels



	22	24	26	28	30	32	34	36
R								
L								

COLOURS

Available 9/30/18

COLOUR **Dark Denim**

STYLE # **10023806**

Available 8/15/18

COLOUR **Grey**

STYLE # **10023778**

BREECHES

The Heritage Elite Breech



HERITAGE ELITE KNEE PATCH

FEATURES Four-way performance stretch nylon/cotton blend fabric • Stain-repellent NanoSphere® finish • Synthetic suede knee patch • Euro seat • Front slant pockets • Performance mesh calf panels • Premium logo trim



	22	24	26	28	30	32	34	36
R								
L								

COLOURS

Replenishment

COLOUR **Navy**

STYLE # **10019318**

Replenishment

COLOUR **Grey**

STYLE # **10019317**

Replenishment

COLOUR **Tan**

STYLE # **10019320**

Replenishment

COLOUR **White**

STYLE # **10019321**



HERITAGE ELITE GRIP FULL SEAT

NEW STYLE

FEATURES Four-way performance stretch nylon/cotton blend fabric • Stain-repellent NanoSphere® finish • Ariat® Hex Grip full seat • Performance mesh calf panels



	22	24	26	28	30	32	34	36
R								
L								

COLOURS

Available 9/30/18

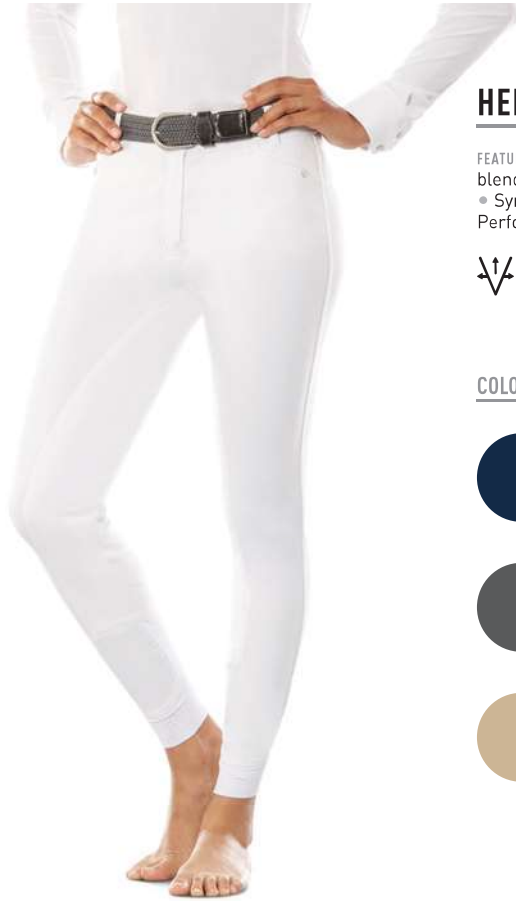
COLOUR **Dark Denim**

STYLE # **10023805**

Available 8/15/18

COLOUR **Grey**

STYLE # **10023777**



HERITAGE ELITE FULL SEAT

FEATURES Four-way performance stretch nylon/cotton blend fabric • Stain-repellent NanoSphere® finish • Synthetic suede full seat • Front slant pockets • Performance mesh calf panels • Premium logo trim



	22	24	26	28	30	32	34	36
R								
L								

COLOURS



Replenishment

COLOUR **Navy**

STYLE # **10019324**



Replenishment

COLOUR **White**

STYLE # **10019326**



Replenishment

COLOUR **Grey**

STYLE # **10019323**



Replenishment

COLOUR **Tan**

STYLE # **10019325**



MEN'S APPAREL

Chester Weber
Combined Driving

NEW COLOUR



Available 8/31/18

IDEAL DOWN® JACKET

COLOUR Alloy
STYLE# 10024044

Packable lightweight down • Stowable interior pocket • Nylon down proof shell • Zippered chest pocket

S	M	L	XL	XXL
---	---	---	----	-----

NEW COLOUR



Available 8/31/18

IDEAL DOWN® VEST

COLOUR Alloy
STYLE# 10024045

Packable lightweight down • Stowable interior pocket • Nylon down proof shell

S	M	L	XL	XXL
---	---	---	----	-----

NEW COLOUR



Available 8/31/18

IDEAL DOWN® VEST

COLOUR Deep Ocean
STYLE# 10024047

Packable lightweight down • Stowable interior pocket • Nylon down proof shell

S	M	L	XL	XXL
---	---	---	----	-----

Check Availability

IDEAL DOWN® VEST

COLOUR Black
STYLE# 10016014

Packable lightweight down • Stowable interior pocket • Nylon down proof shell

S	M	L	XL	XXL
---	---	---	----	-----

Available 8/31/18

IDEAL WINDBREAKER JACKET

COLOUR True Navy
STYLE# 10022567

Lightweight, packable windbreaker with mesh lining • Jersey fleece side panel • Stow pocket

S	M	L	XL	XXL
---	---	---	----	-----



Check Availability

IDEAL WINDBREAKER JACKET

COLOUR Black
STYLE# 10019140

Lightweight, packable windbreaker with mesh lining • Jersey fleece side panel • Stow pocket

S	M	L	XL	XXL
---	---	---	----	-----

Replenishment

NEW TEAM SOFTSHELL JACKET

COLOUR Black
STYLE# 10019279

Softshell with microfleece backing • Updated colourblock detailing • Stand collar • Zippered hand pockets • Ariat® branding

S	M	L	XL	XXL
---	---	---	----	-----

Replenishment

NEW TEAM SOFTSHELL JACKET

COLOUR Navy
STYLE# 10019280

Softshell with microfleece backing • Updated colourblock detailing • Stand collar • Zippered hand pockets • Ariat® branding

S	M	L	XL	XXL
---	---	---	----	-----

Men's



Check Availability

NEW TEAM POLO

COLOUR **Black**
STYLE# **10019276**

Performance stretch pique • Flat knit rib collar • Colourblocked shoulder panels • Logo buttons and embroidery

S	M	L	XL	XXL
---	---	---	----	-----



Check Availability

NEW TEAM POLO

COLOUR **Navy**
STYLE# **10019277**

Performance stretch pique • Flat knit rib collar • Colourblocked shoulder panels • Logo buttons and embroidery

S	M	L	XL	XXL
---	---	---	----	-----



Check Availability

NEW TEAM POLO

COLOUR **White**
STYLE# **10019278**

Performance stretch pique • Flat knit rib collar • Colourblocked shoulder panels • Logo buttons and embroidery

S	M	L	XL	XXL
---	---	---	----	-----

CHARGER LONG SLEEVE SHIRT

Contrast, branded interior neck tape

Heathered polyester jersey fabric



Moisture Movement Technology™ (MMT™)

Cooling performance

NEW STYLE



Available 6/30/18

CHARGER LONG SLEEVE SHIRT

COLOUR **Blue Steel**
STYLE# **10023544**

Heathered polyester jersey • Contrast, branded interior neck tape

S	M	L	XL	XXL
---	---	---	----	-----

NEW STYLE



Available 6/30/18

CHARGER LONG SLEEVE SHIRT

COLOUR **Charcoal**
STYLE# **10023545**

Heathered polyester jersey • Contrast, branded interior neck tape

S	M	L	XL	XXL
---	---	---	----	-----



HERITAGE ELITE KNEE PATCH

FEATURES Four-way performance stretch nylon/cotton blend fabric • Stain-repellent NanoSphere® finish
 • Synthetic suede knee patch • Front slant pockets
 • Performance mesh calf panels • Premium logo trim



	28	30	32	34	36	38	40
R							
L							

COLOURS



[Check Availability](#)

COLOUR **Navy**

STYLE # **10019273**



[Check Availability](#)

COLOUR **White**

STYLE # **10019275**



[Check Availability](#)

COLOUR **Tan**

STYLE # **10019274**



YOUTH APPAREL

NEW COLOUR



Available 8/15/18
VOLT JACKET

COLOUR Graphite
STYLE# 10023536

Featherweight quilted shell • Cool Climate Insulation™
• Stretch fleece side panels • Zippered hand pockets • Two-way zipper

XS (7)	S (8)	M (10)	L (12)	XL (14)	XXL (16)
--------	-------	--------	--------	---------	----------

NEW COLOUR



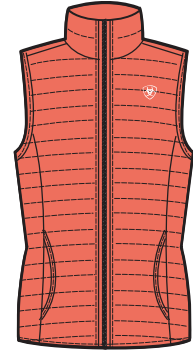
Available 8/15/18
IDEAL DOWN® VEST

COLOUR Atomic Blue
STYLE# 10023528

Packable down for ultimate lightweight warmth • Packs easily into attached pouch

XS (7)	S (8)	M (10)	L (12)	XL (14)	XXL (16)
--------	-------	--------	--------	---------	----------

NEW COLOUR



Available 8/15/18
IDEAL DOWN® VEST

COLOUR Calypto Coral
STYLE# 10023529

Packable down for ultimate lightweight warmth • Packs easily into attached pouch

XS (7)	S (8)	M (10)	L (12)	XL (14)	XXL (16)
--------	-------	--------	--------	---------	----------

NEW COLOUR



Available 8/15/18
EMMA REVERSIBLE VEST

COLOUR Coastal Grey Ponies
STYLE# 10023524

Print outer reverses to solid • Lightweight polyfill insulation • Mock collar • Hand pockets both sides

XS (7)	S (8)	M (10)	L (12)	XL (14)	XXL (16)
--------	-------	--------	--------	---------	----------

NEW COLOUR



Available 8/15/18
LAUREL JACKET

COLOUR Coastal Grey Ponies
STYLE# 10023530

Novelty printed shell • Microfleece inner lining

XS (7)	S (8)	M (10)	L (12)	XL (14)	XXL (16)
--------	-------	--------	--------	---------	----------

NEW COLOUR



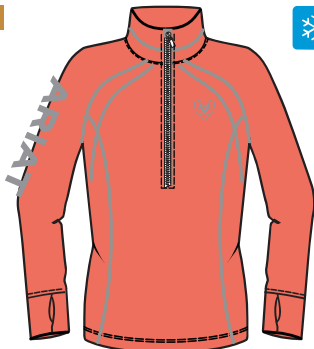
Replenishment
NEW TEAM SOFTSHELL JACKET

COLOUR Navy
STYLE# 10019268

Softshell with microfleece backing • Colourblock detailing • Stand collar • Zippered hand pockets • Ariat® branding

XS (7)	S (8)	M (10)	L (12)	XL (14)	XXL (16)
--------	-------	--------	--------	---------	----------

NEW STYLE



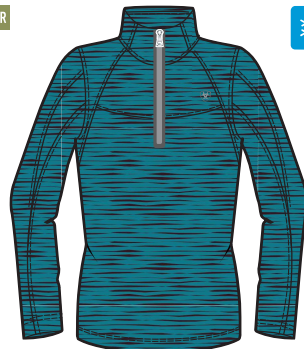
Available 8/15/18
TEK TEAM 1/2 ZIP

COLOUR Calypto Coral
STYLE# 10023533

Stretch tek fleece • Moisture wicking • Mock collar

XS (7)	S (8)	M (10)	L (12)	XL (14)	XXL (16)
--------	-------	--------	--------	---------	----------

NEW COLOUR



Available 8/15/18
CONQUEST 1/2 ZIP

COLOUR Atomic Blue
STYLE# 10023521

Stretch tek fleece • Moisture wicking • Mock collar

XS (7)	S (8)	M (10)	L (12)	XL (14)	XXL (16)
--------	-------	--------	--------	---------	----------

NEW COLOUR



Check Availability
SUNSTOPPER TOP

COLOUR Navy Dot
STYLE# 10014704

Lightweight pique knit • Sun Protection Fabric™ • Stand collar • Breathable mesh underarm panelling

XS (7)	S (8)	M (10)	L (12)	XL (14)	XXL (16)
--------	-------	--------	--------	---------	----------

Youth

NEW STYLE



Available 8/15/18

CUPID TEE

COLOUR **White**
STYLE# **10023522**

XS (7) S (8) M (10) L (12) XL (14) XXL (16)

NEW STYLE



Available 8/15/18

EXCUSES TEE

COLOUR **Graphite Heather**
STYLE# **10023526**

XS (7) S (8) M (10) L (12) XL (14) XXL (16)

NEW STYLE



Available 8/15/18

LOGO TEE

COLOUR **Atomic Blue**
STYLE# **10023531**

XS (7) S (8) M (10) L (12) XL (14) XXL (16)

NEW STYLE



Available 8/15/18

MIXER TEE

COLOUR **Calypso Coral**
STYLE# **10023532**

XS (7) S (8) M (10) L (12) XL (14) XXL (16)

NEW STYLE



Check Availability

NEW TEAM POLO

COLOUR **Navy**
STYLE# **10019258**

Performance stretch pique • Flat knit rib collar • Colourblocked shoulder panels • Logo buttons and embroidery

XS (7) S (8) M (10) L (12) XL (14) XXL (16)

NEW STYLE



Check Availability

NEW TEAM POLO

COLOUR **White**
STYLE# **10019260**

Performance stretch pique • Flat knit rib collar • Colourblocked shoulder panels • Logo buttons and embroidery

XS (7) S (8) M (10) L (12) XL (14) XXL (16)

NEW STYLE



Check Availability

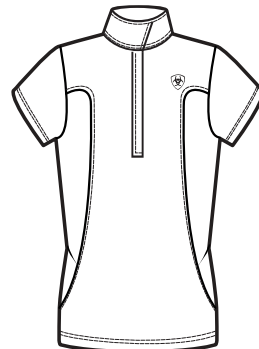
APTOS SHOW SHIRT

COLOUR **Blossom**
STYLE# **10010533**

Poly/spandex blend pique • Show collar • Placket with snap closures • Stock tie loop

XS (7) S (8) M (10) L (12) XL (14) XXL (16)

NEW STYLE



Check Availability

APTOS SHOW SHIRT

COLOUR **White**
STYLE# **10009461**

Poly/spandex blend pique • Show collar • Placket with snap closures • Stock tie loop

XS (7) S (8) M (10) L (12) XL (14) XXL (16)

NEW COLOUR



Available 1/15/18

APTOS SHOW SHIRT

COLOUR **White/Blue Stripe**
STYLE# **10022154**

Poly/spandex blend pique • Show collar • Placket with snap closures • Stock tie loop

XS (7) S (8) M (10) L (12) XL (14) XXL (16)

NEW COLOUR



Available 1/15/18

FASHION APTOS COLOURBLOCK SHOW SHIRT

COLOUR White/Plum Perfect
 STYLE# 10022153

Poly/spandex blend pique • Show collar • Placket with snap closures • Stock tie loop

XS (7)	S (8)	M (10)	L (12)	XL (14)	XXL (16)
--------	-------	--------	--------	---------	----------



Check Availability

FASHION APTOS COLOURBLOCK SHOW SHIRT

COLOUR White/Navy
 STYLE# 10019269

Poly/spandex blend pique • Show collar • Placket with snap closures • Stock tie loop

XS (7)	S (8)	M (10)	L (12)	XL (14)	XXL (16)
--------	-------	--------	--------	---------	----------

Replenishment

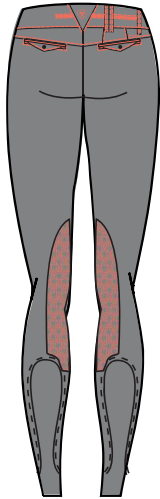
SUNSTOPPER SHOW SHIRT

COLOR White
 STYLE# 10016932

Lightweight pique knit • Sun Protection Fabric™ • Woven wrap collar • Breathable mesh underarm paneling • Snap placket closure • Stock tie loop

XS (7)	S (8)	M (10)	L (12)	XL (14)	XXL (16)
--------	-------	--------	--------	---------	----------

NEW STYLE



Available 8/15/18

HERITAGE ELITE GRIP KNEE PATCH

COLOUR Grey
 STYLE# 10023781

TECHNOLOGY

FEATURES Four-way performance stretch nylon/cotton blend fabric • Stain-repellent NanoSphere® finish • Ariat® Hex Grip knee patch • Euro seat • Performance mesh calf panels

7	8	10	12	14	16
---	---	----	----	----	----



Replenishment

HERITAGE ELITE KNEE PATCH

COLOUR Tan
 STYLE# 10019270

TECHNOLOGY

FEATURES Four-way performance stretch nylon/cotton blend fabric • Synthetic suede knee patch • Euro seat • Front slant pockets • Compression mesh calf panels • Premium logo trim

7	8	10	12	14	16
---	---	----	----	----	----



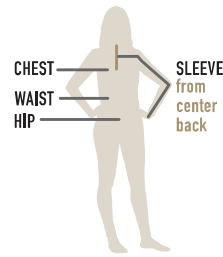


REFERENCE

US & International Apparel Sizing

WOMEN'S

	ALL	XS	S	M	L	XL	XXL					
CHEST	IN	32	33	34	35	36	37	38 ½	40	41 ½	43	45-47
	CM	81.28	83.82	86.36	88.9	91.44	93.98	97.79	101.6	105.41	109.22	114.3-119.38
WAIST	IN	25	26	27	28	29	30	31 ½	33	34 ½	36	38-40
	CM	63 ½	66.04	68.58	71.12	73.66	76.2	80.01	83.82	87.63	91.44	96.52-101.6
LOW HIP	IN	35	36	37	38	39	40	41 ½	43	44 ½	46	48-50
	CM	88.9	91.44	93.98	96.52	99.06	101.6	105.41	109.22	113.03	116.84	121.92-127
SLEEVE	IN	30 ¼	30 ½	30 ¾	31	31 ¼	31 ½	31 ¾	32	32 ¼	32 ½	33
	CM	76.84	77.47	78.11	78.74	79.38	80.01	80.65	81.28	81.92	82.55	83.82
SHOW SHIRTS	US	-	30	32	34	36	38	40	42			
	UK/EUR	-	32	34	36	38	40	42	44			
SHOW COATS	US	-	2R	4R	6R	8R	10R	12R	14R			
	EUR	-	6R	8R	10R	12R	14R	16R	18R			
	UK	-	30R	32R	34R	36R	38R	40R	42R			
	US	-	2L	4L	6L	8L	10L	12L	-			
	EUR	-	6L	8L	10L	12L	14L	16L	-			
	UK	-	30L	32L	34L	36L	38L	40L	-			
BREECHES	US/UK	-	22R	24R	26R	28R	30R	32R	34R	36R		
	GER	-	34	36	38	40	42	44	46	48		
	US/UK	-	22L	24L	26L	28L	30L	32L	34L	36L		
	GER	-	68	72	76	80	84	88	92	96		
NUMERIC SIZE	USA	-	2	4	6	8	10	12				



MEASUREMENT GUIDE

CHEST Measure around the shoulder blades, under the armpits and over the fullest part of the bust.

SLEEVE Bend your arm 90 degrees and put your hand on your hip. Hold the tape measure at the centre back of your neck and measure across your shoulder to your elbow, and then down to your wrist.

WAIST Find your natural waistline and measure.

HIP Measure the fullest part of the hip, usually 7-9 inches below the waist.

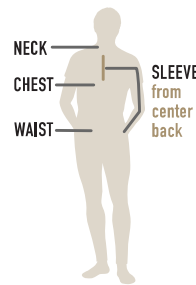
LONG & TALL LENGTHS Sleeve lengths are 1" longer and body lengths are 1½" longer than regular sizing.

BREECHES Ariat® breeches are designed to hit a few inches above your ankle bone for comfort. Inseams 25.5" Regular and 27.5" Long.



MEN'S

		S	M	L	XL	XXL					
NECK	IN	14	14 ¾	15	15 ½	16	16 ½	17	17 ½	18	18 ½
	CM	36.2	37 ½	38.1	39.4	40.6	41.9	43.2	44 ½	45.7	47
CHEST	IN	35	37	38	40	42	44	46	48	50	52
	CM	88.9	94	96 ½	101.6	106.7	111.8	116.8	121.9	127	132
WAIST	IN	28	30	32	34	36	38	40	42	44	46
	CM	73.6	78.7	81.3	86.4	91.4	96 ½	101.6	106.7	111.8	117
LOW HIP	IN	35	37	38	40	42	44	46	48	50	52
	CM	88.9	94	96 ½	101.6	106.7	111.8	116.8	121.9	127	132
SLEEVE	IN	33	33 ½	34	34 ½	35	35 ½	35 ½	36	36	36 ½
	CM	83.8	85.1	86.4	87.6	88.9	90.2	90.2	91.4	91.4	92.7
SHOW COATS	US/CANADA/UK	-	36	38	40	42	44	-			
BREECHES	US/CANADA/UK	28R	30R	32R	34R	36R	38R	40R			
	GER	44	46	48	50	52	54	56			
	US/CANADA/UK	28L	30L	32L	34L	36L	38L	40L			
	GER	86	90	94	98	102	106	110			



MEASUREMENT GUIDE

NECK Measure around the base of your neck, inserting a finger or two between the tape and your neck to allow for comfort.

CHEST Measure around the chest, under the armpits and over the highest part of your chest and shoulder blades keeping the tape parallel to the floor.

SLEEVE Bend your arm 90 degrees and put your hand on your hip. Hold the tape measure at the centre back of your neck and measure across your shoulder to your elbow, and then down to your wrist.

WAIST Find your natural waistline and measure.

LONG & TALL LENGTHS Sleeve lengths are 1" longer and body lengths are 1½" longer than regular sizing.

BREECHES Ariat breeches are designed to hit a few inches above your ankle bone for comfort. Inseams 26" Regular and 28" Long.

GIRLS'

		XS	S	M	L	XL	XXL
US/CANADA/UK		7	8	10	12	14	16
EUR		122	128	140	152	164	176
HEIGHT	IN	50 ½	52 ½	55	58	61	62 ½
	CM	128.3	133.4	139.7	147.3	155	158.8
CHEST	IN	26	27	28 ½	30	31 ½	33 ½
	CM	66	68.6	72.4	76.2	80	85.1
WAIST	IN	22 ½	23	24	25	26	27
	CM	57.2	58.4	61	63.5	66	68.6
HIP	IN	27 ½	28 ½	30	32	34	36
	CM	69.9	72.4	76.2	81.3	86.4	91.4
CB SLEEVE LENGTH	IN	24	24 ¾	25 ¾	27 ¼	28 ¾	30
	CM	61	62.9	65.4	69.2	73	76.2
INSEAM	IN	23	24 ½	26	27 ½	29	29 ½
	CM	58.4	62.2	66	69.9	73.7	74.9

YOUTH UNISEX

		XS	S	M	L	XL	XXL
US/CANADA/UK		7	8	10	12	14	16
EUR		122	128	140	152	164	176
HEIGHT	IN	50	52	54	58	61	64
	CM	127.0	132.1	137.2	147.3	154.9	162.6
CHEST	IN	26 ½	27 ½	29	31	33	35
	CM	67.3	69.9	73.7	78.7	83.8	88.9
WAIST	IN	23 ½	24	25	26	27	28
	CM	59.7	61.0	63.5	66.0	68.6	71.1
HIP	IN	27 ½	28 ½	30	32	34	36
	CM	69.9	72.4	76.2	81.3	86.4	91.4
CB SLEEVE LENGTH	IN	23 ¾	24 ½	26	27 ½	29 ½	31 ½
	CM	60.3	62.2	66.0	69.9	74.9	80.0
INSEAM	IN	23	24 ½	26	27 ½	29	29 ½
	CM	58.4	62.2	66.0	69.9	73.7	74.9

**FSC/MIX LABEL
(FPO)**

ARIAT INTERNATIONAL, INC.

3242 Whipple Road
Union City, CA 94587 USA
Phone: 510-477-7000
Toll Free: 800-899-8141
Fax: 510-477-6900
Email: info@ariat.com

ARIAT EUROPE LIMITED

Princes Manor Barns
Reading Road
Harwell
Oxfordshire
OX11 0LU
Phone: +44 1367 242818
Fax: +44 1235 831632
Email: info.ae@ariat.com

AUSTRALIA / NEW ZEALAND / ASIA PACIFIC RIM

Just Country Australia
P.O. Box 211
Acacia Ridge QLD 4110
Australia
Phone: +617 3711 8000
Fax: +617 3711 9322
Email: sales@justcountry.com.au

ARIAT.COM
NEWB2B.ARIAT.COM

For more information on sales associate training of Ariat product and technologies, contact your sales representative

©2017 Ariat® is a registered trademark of Ariat International, Inc. All rights reserved.

